

Features



- Independent design with plastic housing design
- Constant voltage output
- Analogue flicker-free
- Built-in active PFC function
- Primary and secondary sides come with leads
- Protections: opencircuit, shortcircuit, overload, overtemperature
- Differential mode 2kV and common mode 4kV surge immunity
- Suitable for protection class I & II luminaires
- SELV equivalent
- Protection class II
- IP67 design



CB CE

Selection Guide

Model No.	Nominal Voltage (V)	Nominal Current (A)	Power Factor (λ)	THD Full load (%)	Max. Output (W)	Output Current (A)	Output Voltage (V)	No Load Voltage (V)	Efficiency Full Load (%)
PW-40-12	220-240	0.25	0.95	15	40	0-3.33	12	N/A	83
PW-40-24	220-240	0.25	0.95	15	40	0-1.67	24	N/A	85
PW-40-48	220-240	0.25	0.95	15	40	0-0.83	48	N/A	86

Input Parameters

Parameter	Condition	Min.	Typ.	Max.																				
Input Voltage Range	AC Input	198VAC	--	264VAC																				
	DC Input	176VDC	--	280VDC																				
Rated Input Frequency	AC Input	--	50/60Hz	--																				
No-load Power Consumption		--	--	0.5W																				
Inrush Current	Cold Start@230V	30A/200us																						
Max.units Per Circuit Breaker	<table border="1"> <thead> <tr> <th>Circuit Breaker</th> <th colspan="4">Circuit Breaker Current</th> </tr> <tr> <th>Typ.</th> <th>10A</th> <th>13A</th> <th>16A</th> <th>20A</th> </tr> </thead> <tbody> <tr> <td>B</td> <td>8</td> <td>11</td> <td>13</td> <td>17</td> </tr> <tr> <td>C</td> <td>18</td> <td>23</td> <td>29</td> <td>36</td> </tr> </tbody> </table>				Circuit Breaker	Circuit Breaker Current				Typ.	10A	13A	16A	20A	B	8	11	13	17	C	18	23	29	36
Circuit Breaker	Circuit Breaker Current																							
Typ.	10A	13A	16A	20A																				
B	8	11	13	17																				
C	18	23	29	36																				

Output Parameters

Parameter	Condition	Min.	Typ.	Max.
Output Accuracy	Full Load@230V	--	±5%	--
Ripple & Noise	Low Frequency < 120Hz, Full Load@230VAC	--	--	5%
Pst LM		--	--	1

SVM	--	--	0.4
Galvanic Isolation	SELV		
Short-Circuit Protection (SCP)	Auto-Recovery If Fault Is Removed		
Over-Temperature Protection (OTP)	Auto-Recovery If Fault Is Removed		
Over-Voltage Protection (OVP)	Auto-Recovery If Fault Is Removed		
Over-Current Protection (OCP)	Auto-Recovery If Fault Is Removed		

General Parameters

Parameter	Condition	Value
Ambient Temperature Range t_a		-40...+45°C
Maximum Case Temperature t_c	Measured on t_c point indicated of the product label	90°C
Max. Case Temp. In Fault Condition		110°C
Storage Temperature Range		-40...+70°C
Relative Humidity	Non Condensing	5...85%
Withstand Voltage	I/P-O/P	3.75kVAC, I leakage < 5mA, 60s
Surge Transient Protection	L-N, L/N-PE	2kV, 4kV
Environmental Rating		Outdoor
IP Rating		IP67
Mains Switching Cycles		> 100,000
Expected Lifetime	$t_{cmax}=90^\circ\text{C}$, 0.2%/1000h failure rate	50,000h

Physical Parameters

Housing Material	Plastic
Type of connection	Cable
Dimensions (LxWxH)	130x45x28mm
Mounting hole spacing	120x35mm
Weight	310 ± 15g

Standards

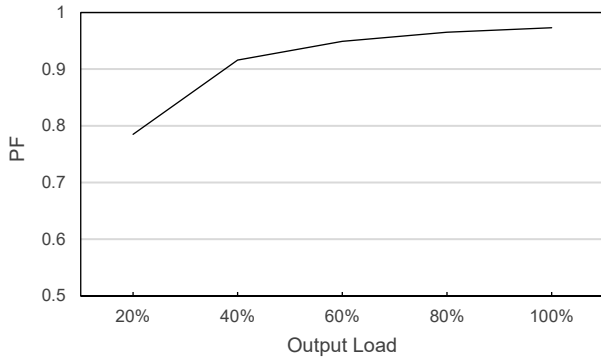
Safety Standards	EN 61347-1, EN 61347-2-13
Performance	EN 62384
EMC Standards	EN 55015, EN 61000-3-2, EN 61000-3-3, EN 61547

*ALL parameters NOT specially mentioned are measured at 230VAC input, rated current and 25°C of ambient temperature.

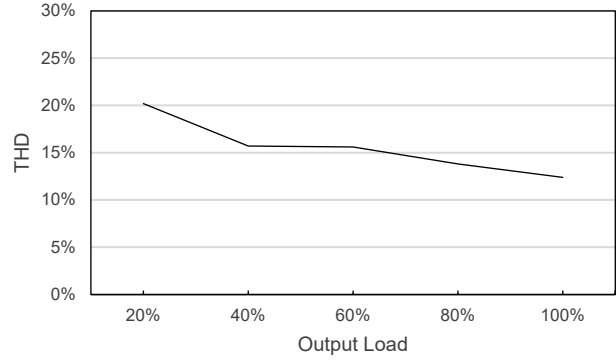
*The equipment cannot be abutted against or covered by normally flammable materials or used in installations where building insulation or debris is, or may be, present in normal use.

Product Characteristic Curve

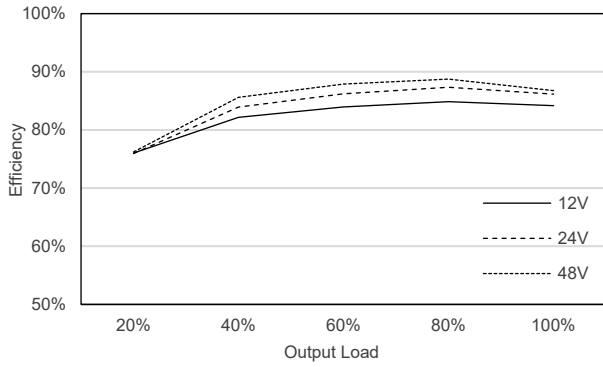
Power Factor vs Load



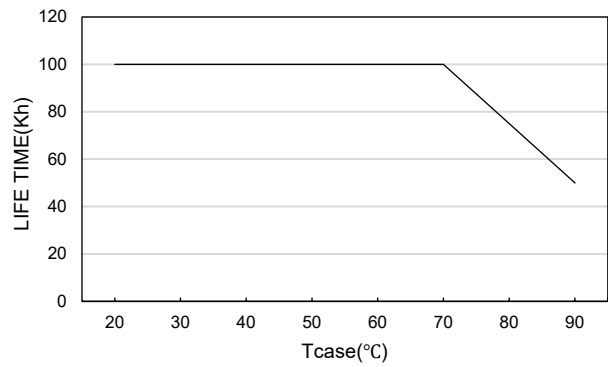
Total Harmonic Distortion vs Load



Efficiency vs Load

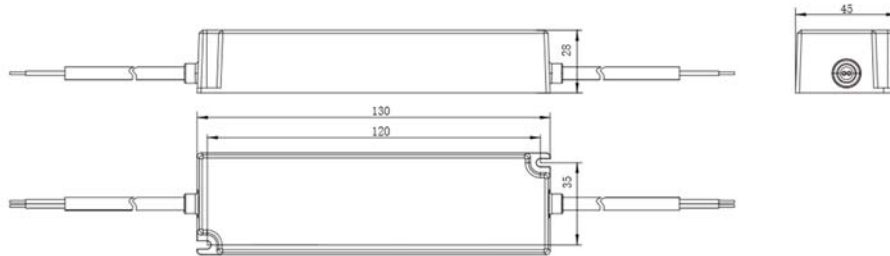


Life Time vs Case Temperature

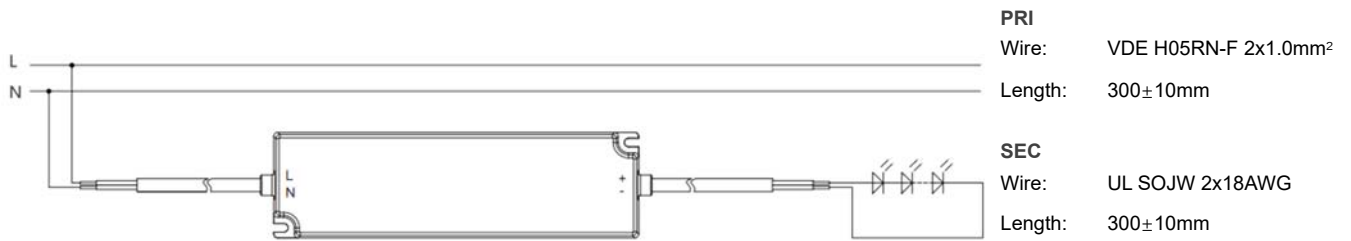


Appearance of Size

Dimension Drawing(mm)



Wiring Diagram



Hot plug-in or secondary switching of LEDs is not permitted and may cause a very high current to the LEDs.